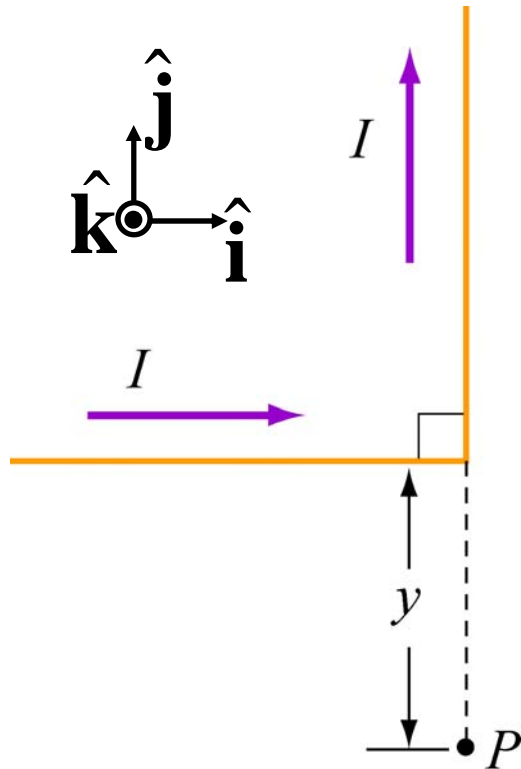


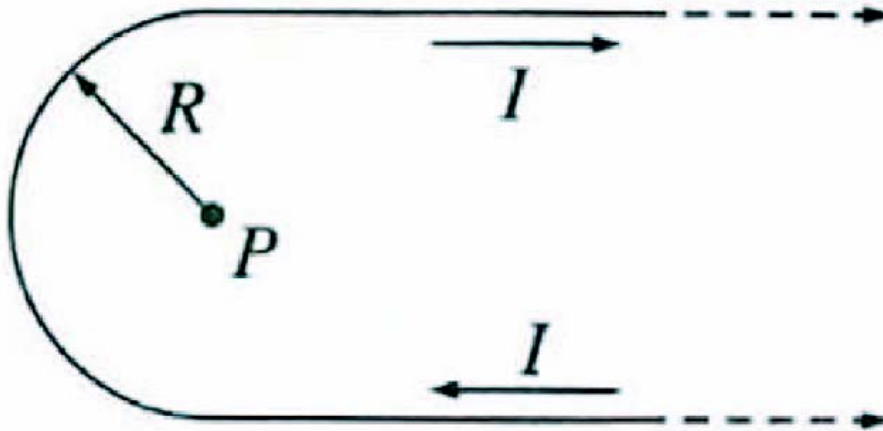
# Bent Wire



The magnetic field at point P

1. points towards the +x direction
2. points towards the +y direction
3. points towards the +z direction
4. points towards the -x direction
5. points towards the -y direction
6. points towards the -z direction
7. points nowhere because it is zero

## Curved Wire



The magnetic field at  $P$  is equal to the field of:

1. a semicircle
2. a semicircle plus the field of a long straight wire
3. a semicircle loop minus the field of a long straight wire
4. none of the above