

$$F = C_1rv + C_2r^2v^2 \quad F = \frac{mMG}{r^2} \quad \mathbf{F} = \frac{d\mathbf{p}}{dt} = m\mathbf{a} \quad dW = \mathbf{F} \cdot d\mathbf{r} \quad a_{cent} = \frac{v^2}{r} = \omega^2r$$

$$U = \frac{-mMG}{r} \quad U = mgh \quad U = \frac{1}{2}kx^2 \quad K = \frac{1}{2}mv^2 \quad K = \frac{1}{2}I\omega^2$$

$$E_{\text{tot}} = K + U = \frac{1}{2}mv^2 - \frac{mMG}{r} = \frac{-mMG}{2a} \quad \mathbf{L} = \mathbf{r} \times \mathbf{p} \quad I = \sum_i m_i r_i^2$$

$$m_1r_1 = m_2r_2 \quad v = \omega r \quad T^2 = \frac{4\pi^2(r_1 + r_2)^3}{G(m_1 + m_2)} \quad \omega = \frac{d\theta}{dt} \quad \omega = \sqrt{k/m}$$

$$\boldsymbol{\tau} = \mathbf{r} \times \mathbf{F} = I\boldsymbol{\alpha} = \frac{d\mathbf{L}}{dt} \quad \alpha = \frac{d\omega}{dt} \quad T = \frac{2\pi}{\omega} \quad L = I\omega \quad \mathbf{I} = \int_0^{\Delta t} \mathbf{F} dt = \mathbf{p}_f - \mathbf{p}_i$$

$$\omega = \sqrt{g/l} \quad \omega_{\text{pr}} = \frac{\tau}{L_s} \quad T^2 = \frac{4\pi^2a^3}{GM}$$

$$\text{Solid disk of mass } M \text{ and radius } R \text{ rotating about its cylindrical axis: } I = \frac{1}{2}MR^2$$

$$\text{Solid sphere of mass } M \text{ and radius } R \text{ rotating about an axis through its center: } I = \frac{2}{5}MR^2$$

$$v_f - v_i = -u \ln\left(\frac{m_f}{m_i}\right) - gt \quad I = I_{\text{cm}} + Md^2 \quad I_z = I_x + I_y$$

$$f' = f \left(1 + \frac{v}{c} \cos \theta\right) \quad \lambda' = \lambda \left(1 - \frac{v}{c} \cos \theta\right) \quad \frac{dP}{dy} = -\rho g$$

$$PV = nRT \quad R = 8.31\text{J/K} \quad PV = NkT \quad k = 1.38 \times 10^{-23}\text{J/K} \quad N_A = 6.02 \times 10^{23}$$

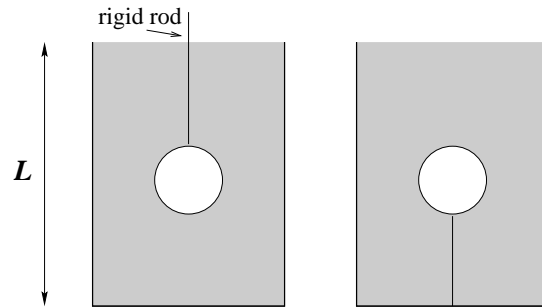
$$\lambda = \frac{h}{p} \quad E = hf = \frac{hc}{\lambda} \quad \Delta L = \alpha L \Delta T \quad \Delta V = \beta V \Delta T$$

$$h = 6.6 \times 10^{-34} \text{ J} \cdot \text{sec} \quad \hbar = \frac{h}{2\pi} = 1.05 \times 10^{-34} \text{ J} \cdot \text{sec}$$

$$\frac{1}{2}\rho v_1^2 + \rho g y_1 + P_1 = \frac{1}{2}\rho v_2^2 + \rho g y_2 + P_2$$

Problem 8 (18 points)

A cylindrical container of length L is full to the brim with a liquid which has mass density ρ . It is placed on a weigh-scale; the scale reading is W . A light ball which would float on the liquid if allowed to do so, of volume V and mass m is pushed gently down and held beneath the surface of the liquid with a rigid rod of negligible volume as shown on the left.



- a. (4) What is the mass M of liquid which overflowed while the ball was being pushed into the liquid?
- b. (6) What is the reading of the scale when the ball is fully immersed? Give your reasons.
- c. (8) If instead of being pushed down by a rod, the ball is held in place by a thin string attached to the bottom of the container as shown on the right. What is the tension T in the string, and what is the reading on the scale?

Problem 8 18 points

4 pts a) $\mathbf{M} = \rho \mathbf{V}$

6 pts b) $W' = W - Mg + F_{\text{buoy}} \quad F_{\text{buoy}} = Mg$

$$W' = W - Mg + Mg \rightarrow \mathbf{W}' = \mathbf{W}$$

8 pts c) $mg + T = F_{\text{buoy}} = Mg \rightarrow \mathbf{T} = \mathbf{Mg} - \mathbf{mg}$

$$\mathbf{W}' = \mathbf{W} - \mathbf{Mg} + \mathbf{F}_{\text{buoy}} - \mathbf{T} = \mathbf{W} - \mathbf{T}$$