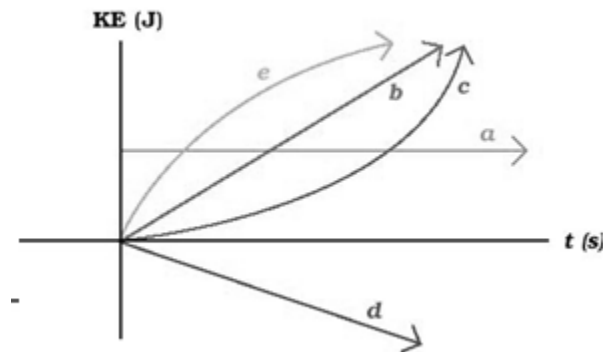
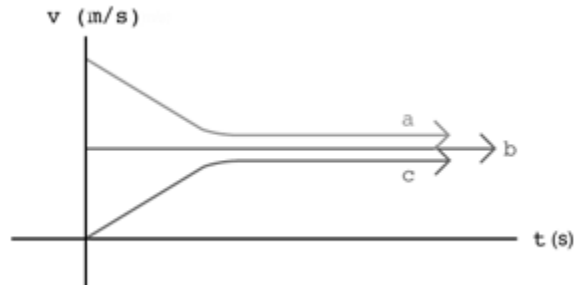


3. An object is dropped to the earth from a height of 10m. Which of the following sketches best represent the kinetic energy of the object as it approaches the earth (neglect friction).



- 1.a
- 2.b
- 3.c
- 4.d
- 5.e

4. A ball is dropped into a jar of corn oil. Which of the following sketches best represent the speed of the ball as a function of time? (Assume it is released from the top of the column of corn oil)



1.a

2.b

3.c